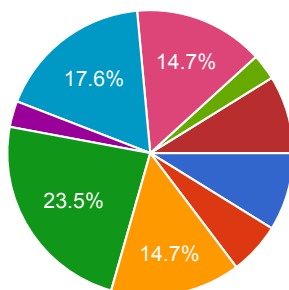


56 responses

[Publish analytics](#)

Summary

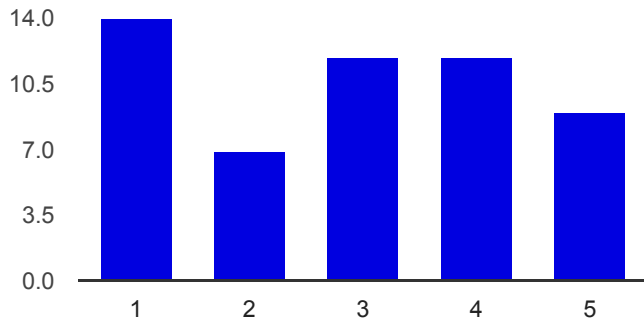
In which department do you primarily teach?



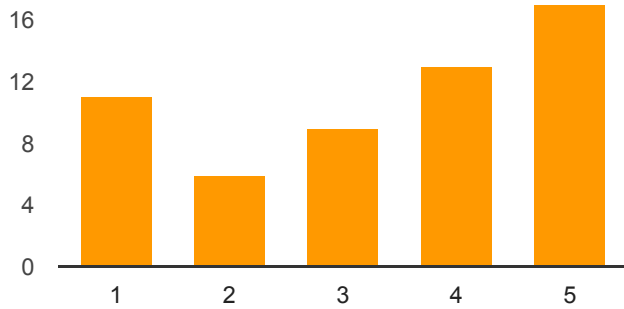
English	3	8.8%
Fine Arts	2	5.9%
Language	5	14.7%
Math	8	23.5%
Physical Education	1	2.9%
Religious Studies	6	17.6%
Science	5	14.7%
Social Science	1	2.9%
Other	3	8.8%

Please rate your interest in hearing more about the following topics relating to classroom assessment

Balancing formative and summative assessments

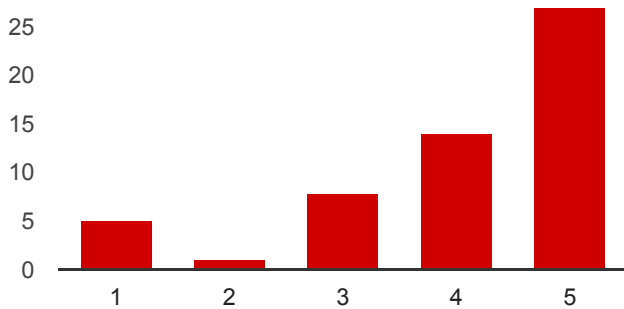


Determining a grade



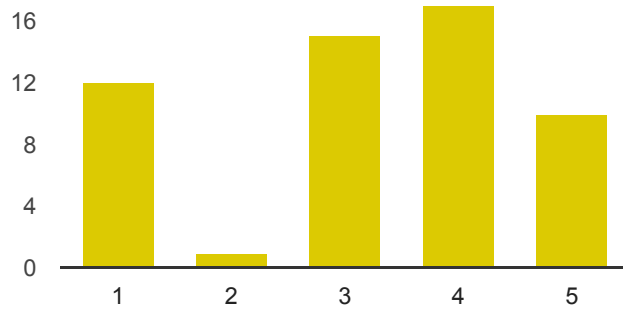
Low: 1	11	19.6%
2	6	10.7%
3	9	16.1%
4	13	23.2%
High: 5	17	30.4%

Designing valid assessments



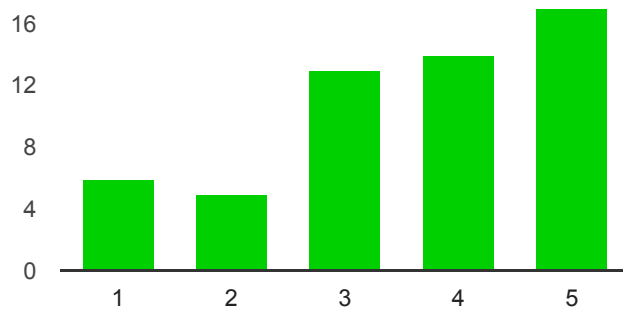
Low: 1	5	9.1%
2	1	1.8%
3	8	14.5%
4	14	25.5%
High: 5	27	49.1%

Effectively using assessment data



Low: 1	12	21.8%
2	1	1.8%
3	15	27.3%
4	17	30.9%
High: 5	10	18.2%

Role of homework in an assessment system



Low: 1	6	10.9%
2	5	9.1%
3	13	23.6%

4 14 25.5%
High: 5 17 30.9%

Is there another topic you'd like to know more about, or a specific question you'd like Pete to address?

- Assessments for counselors to use with students
- Policies around retakes or test corrections
- Retake policy. What does the research state about retaking summative assessments?
- Can we talk about the Finals structure specifically? And how those summative assignments relate to the rest of the semester.
- Reassessment pros and cons
- Designing and grading collaborative assessments
- Creating valid assessments for performance tasks and project based learning modules
- Training students to effectively assess their work and serve as a helpful peer editor
- none
- should homework be given at all

Number of daily responses

