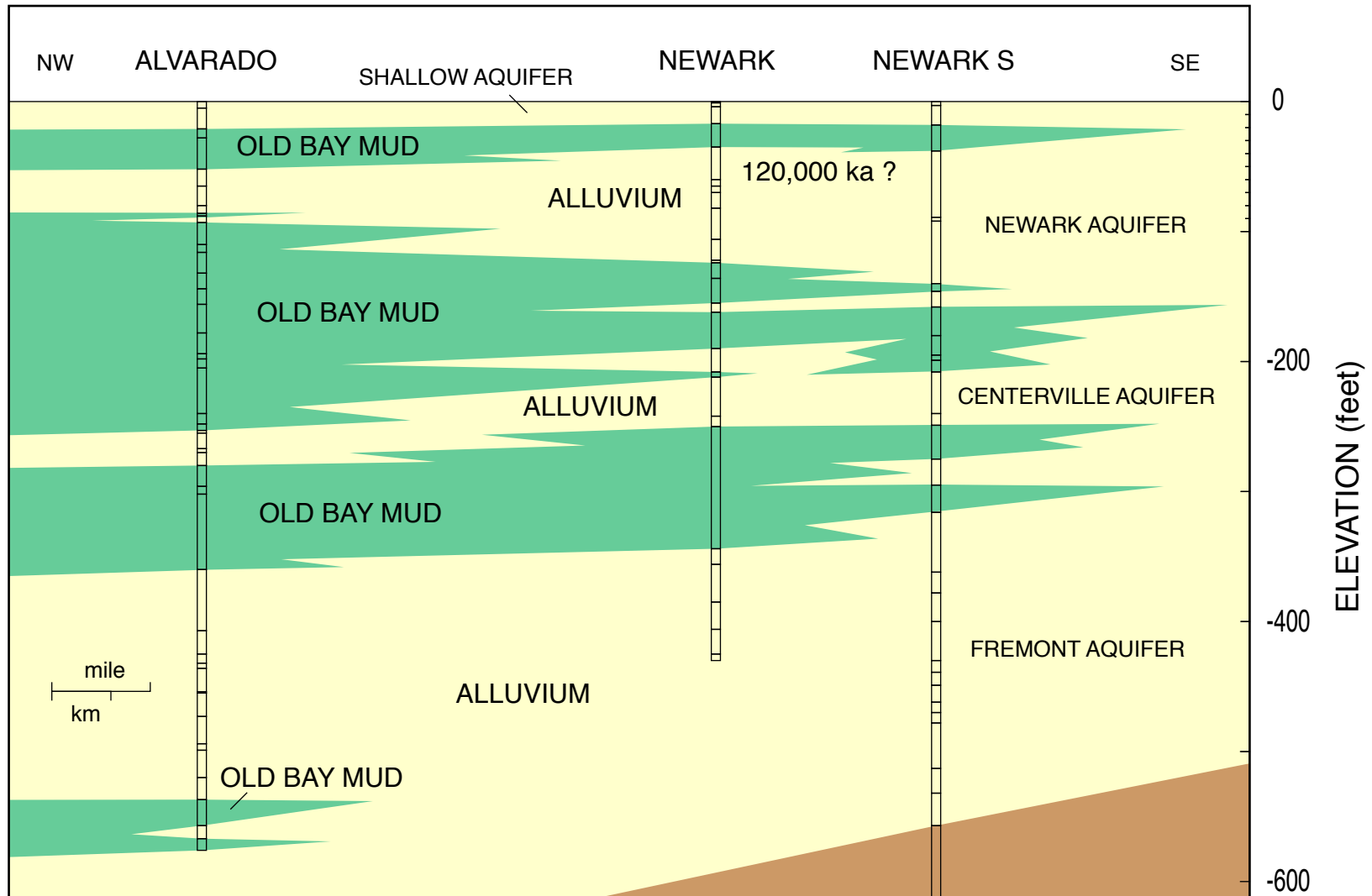


OLD BAY MUDS EAST OF COYOTE HILLS



DATA FROM ALAMEDA COUNTY WATER DISTRICT

Deep water wells east of Coyote Hills in the South Bay penetrate several beds of old bay mud, indicating there were at least four bays prior to the present one. These older bays existed during previous interglacial sea-level highstands, but exact correlations and age estimates cannot be made with existing data from these wells. A few of the older bay-mud layers extend almost to the Hayward fault, indicating the bays in which they were deposited were much larger than the present bay, which barely extends east of Coyote Hills. Either past sea levels were higher, or less sediment filled the subsiding basin in ancient times. The alluvium interbedded with the old bay muds was deposited by streams during glacial sea-level lowstands.